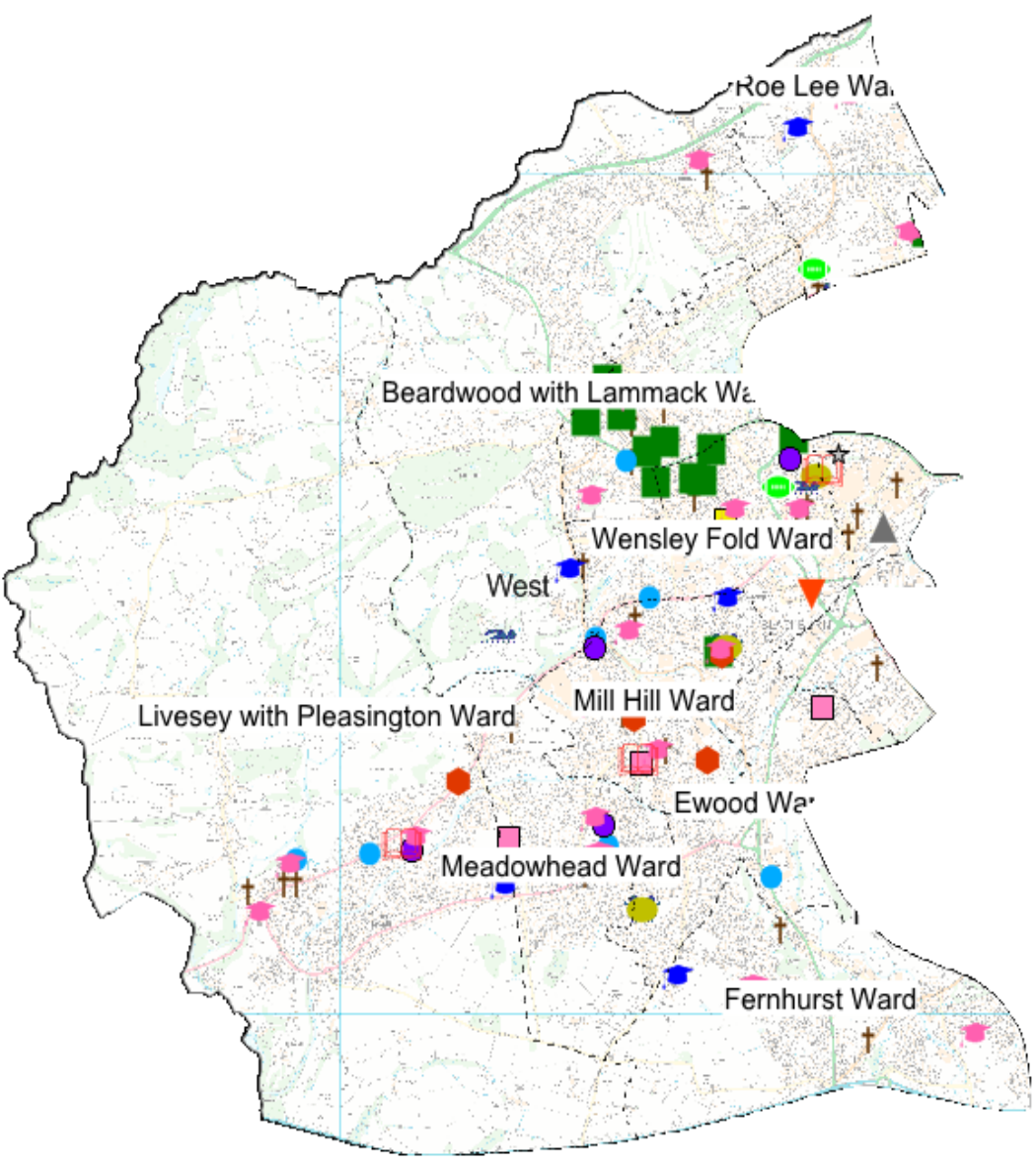


BLACKBURN WEST



- ☆ Museums
- 📖 Libraries
- 🎡 Leisure Centres
- 🎓 Secondary Schools
- 🎒 Primary Schools
- 🏠 Learning Centres
- 🏥 Health Centres
- 👨‍⚕️ GP Surgeries
- 🏠 Community Centres
- 👴 Adult Services
- 🏠 Rest Centres
- 🏠 Rest Centres
- 🚒 Fire Stations
- 🚑 Ambulance Stations
- ★ Temples
- 🕌 Mosques
- ✝️ Churches
- 👶 Childrens Centres

Significant risks	Very High	High	Medium	Low	Very Low
Extreme Weather	Heavy Snow/ Heatwave	Drought	Storms & gales		
Transport		Local accident on motorway	Railway accident		
Canal breaches		✓			

Leeds / Liverpool Canal (British Waterways)

This is the longest canal in Britain built as a single waterway with 162.5 kilometres within Lancashire. One of three trans-Pennine waterways, landmarks includes the Burnley Embankment and Foulridge Tunnel. Canals are not often recognised as a flood risk, however its raised nature and proximity of the canal to the urban areas does present a potential flood risk.

Major Rivers

There are 3 major rivers:

Darwen runs through Darwen and Blackburn and it is joined by the River Blakewater near Witton Country Park.

Blakewater joins the River Darwen at Witton and continues on to join the River Ribble at Walton-le-Dale. It rises on the moors above Guide as Knuzden Brook.

Roddlesworth runs through a wooded valley close to Tockholes, Roddlesworth, Abbey Village and Stanworth before joining the River Darwen at Moulden Brow close to Feniscowles. The river continues through Livesey where it is met by Stockclough Brook



In 1998, the **M65** linked East Lancashire to the national motorway network. This provided a further opportunity to bring new investment to the borough and to being the task of restructuring the economy and tackling the worse effects of economic decline. The M65 has improved access to the area and a significant amount of development has taken place to the M65 motorway, the authority includes a number of well-established local employers and a range of other public and private organisations that add to the employment mix.

Witton Country Park is 480 acres of beautiful mixed woodland, parkland & farmland to the west of Blackburn. Within this lies a full size athletics track and is the home to Blackburn Harriers and athletics club.



Beardwood with Lammack is situated in the North West of the borough. The old ward comprised of 488 hectares in area, which encompassed mainly private residential areas and Witton Country Park.

Livesey with Pleasington is situated in the North West of the borough to the West of Blackburn. It is a largely rural area with housing concentrated in the South of the ward at Feniscowles and the Cherry Tree area, the ward covers 1,125 hectares.

Corporation Park is situated in the North West of the borough. It is an area of mainly terraced housing and encompasses the Victorian Corporation Park. The ward is just over 120 hectares in area.

Ewood is situated on the southern fringe of Blackburn. The old ward contained the Livesey residential area, the Blackburn Rovers football stadium and Blackburn Royal Infirmary. It was mainly urban and is 158 hectares in area.

Fernhurst ward had been created as a new ward for the 2004 local election. It comprises the northern half of the old Earcroft ward and part of the old Ewood ward. Because of the boundary changes, comparisons cannot be made to the 1991 census data, which is based on the old ward boundaries. The old ward of Earcroft encompassed an M65 junction, the Birch Hall residential area and the Akzo Nobel industrial plant. It covered some 470 hectares.

Meadowhead is situated in the North West of the Borough on the western edge of Blackburn. The old boundary was a largely urban area containing the Fenisccliffe and Green Lane residential areas.